

FOR LEASE



31



Hong Kong Street

Restaurant & Office space for Lease

- 5-storey art deco building with lift access
- Ground floor restaurant approved space
- Lift accessible office space on upper floors
- 2 minutes walk from Clarke Quay MRT (North-East Line)
- 5 minutes walk to Raffles Place Central Business District



Location Map



- Hotels**
- 1 Fragrance Riverside
 - 2 Jayleen 1918
 - 3 Hotel Clover 5
 - 4 Hotel Clover the Arts
 - 5 Le Hotel
 - 8 Hotel Bencoolen
 - 7 Swissotel Merchant Court
 - 8 Park Regis
 - 9 Parkroyal at Pickering Street

- Office**
- 1 SOHO@Central
 - 2 Havelock II
 - 3 One George Street
 - 4 Great Eastern Centre
 - 5 Nankin Row
 - 6 18 Cross Street
 - 7 Far East Square

- Residential**
- 1 SOHO@Central
 - 2 Riverwalk Apartment

- Nearby restaurants**
- 1 28 Hong Kong Street
 - 3 Bacchanalia
 - 2 Ronin
 - 4 FOC
 - 5 Vasco

- Retail**
- 1 Clarke Quay Central
 - 3 Boat Quay
 - 2 Clarke Quay Entertainment
 - 4 Chinatown Point
 - 5 China Square Central

- MRT SERVICES**
- DT DOWNTOWN LINE
 - EW DOWNTOWN LINE
 - NS NORTH SOUTH LINE
 - NE NORTH EAST LINE

Map not to scale

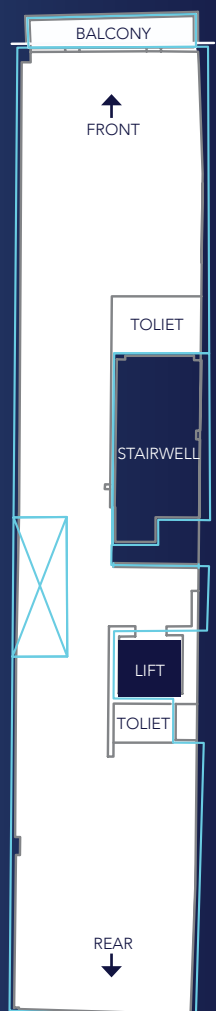


Floor Plan

Floor Area (sq.ft)

Level 1	1,300 ¹
Level 2	1,470
Level 3	1,509
Level 4	1,509
Level 5	1,756 ²
Total	7,544

¹ Subject to final survey
² Includes a roof terrace & mezzanine floor



CONTACT DETAILS
 Janelle Wong
 Tel: +65 6323 0452
 Email: janelle@8mre.com

The landlord gives notice that the particulars do not constitute, nor constitute as any part of an offer or a contract. All descriptions, dimensions, and other particulars are given in good faith and are believed to be correct but any intending purchasers or tenants should not rely on them as statements or representations of fact and must satisfy themselves by inspection or otherwise as to the correctness of each of them. There is no representation or warranty whatever in relation to this property.